

AREA

The American Rehabilitation Economics Association

Annual Conference

Offsets: Earnings & Mitigation in Post-COVID Litigation

May 26-28, 2022

Millennium Knickerbocker Hotel

163 East Walton Place, Chicago, IL 60611



Offsets: Earnings & Mitigation in Post-COVID Litigation

Welcome Members, Friends, and Visitors:

It's a great day in the world of AREA! After 3 years of planning, and 2 years of delay due to COVID, we WELCOME you to our in-person event by way of this conference brochure. Feel free to be our guest, and take a peek at the entire program on your screen or in your hands.

For anyone who, like me, has only recently begun to again attend in-person conferences, the treat is real. There is so much energy, goodwill, and connection to in-person time together. In a world and time of endless divisions, being together sends a testament of community, of belonging, of sharing what is good and forward-looking in our common humanity.

We can't wait for you to take a look at what awaits you in Chicago for the 2022 AREA Conference. Between May 26 and 28, we have not less than a dozen inspirational speakers who are all experts in their craft. Session topics range from those of Economics, Litigation, Life Care Planning, Ethics, Vocational Assessments, Software, Labor Market Trends, Household Services, and more! As always, the good, the bad, and the differences of opinion will certainly surface. From these discussions, all of us will learn and with that knowledge be better prepared in a post-COVID world that has forever changed much of what we knew in litigation and in our lives.

Our hotel, the Knickerbocker, is a top-shelf one and known for its history and hospitality. Its downtown location is ideal to capture the energy of the city and offer its amenities in fun, food, sights, and sounds.

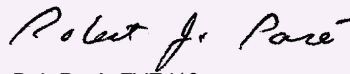
A big Thank YOU goes out to our Conference and Education Chair, Ron Smolarski, CEA '99, who has worked tirelessly on bringing together the speakers and behind-the-scene logistics for the Conference. Also, none of this would be possible without the coordination and guiding hand of our Administrator, Margy Ashby. We owe much to you both.

We especially thank each and every presenting Speaker who has volunteered to share their knowledge, talents, and time with us. Dr. William Houston Reed will deliver this year's Keynote address and speak about the importance of our professional skill set and credentials; he will also highlight AREA's own CEA credential as part of that. Please be sure to let all speakers know how much they are appreciated. As we know, it is one thing to be a great practitioner and yet another to be able to share with and teach others.

Lastly, for those eligible, do consider sitting for the CEA exam which will be held on Sunday, May 29. Good luck to all exam takers!

These are the Good Old Days! I will look forward to seeing you all very soon!

All the best,



Bob Paré, FVE '19
AREA President 2021-22

About AREA ...

The **American Rehabilitation Economics Association** is both a professional association and a certifying body that brings together vocational experts, economic experts, and life care planning experts.

AREA's mission is two-fold:

- Recognizing the integrative use of vocational, life care planning, and economic loss assessment as a distinct discipline, and
- Providing forum for a peer-exchange of information from vocational, economic, and life care planning experts.

Since 1989, for over 30 years, AREA has been dedicated to promoting communication and sharing between these separate yet connected fields to improve the best practices in litigation support.

Through its peer-reviewed journal (*The Earnings Analyst*), annual conference, and periodic virtual continuing educational sessions, AREA promotes an understanding of each expert's role and how those roles are tied together in litigation. Click here for more information about [The Earnings Analyst](#).

AREA's **continuing education** addresses the analysis and calculation of litigated damages, including such topics as lost earning capacity/wage loss, vocational analysis, functional capacity testing, fringe benefits, worklife expectancy, life expectancy, lost household services, personal consumption, future medical costs over a person's lifetime, and discounting future losses or costs to present value.

AREA is the only international certifying body that combines this unique blend of professions in loss assessment. Unique professional designations offered by AREA are the RFE (Registered Forensic Economist), FVE (Forensic Vocational Expert), EA (Earnings Analyst) and the CEA (Certified Earnings Analyst).

Learn more on AREA's website at <http://www.a-r-e-a.org>.

American Rehabilitation Economics Association

PO Box 19941, San Diego, CA 92159-9941 • 800.317.2732 / 619.440.2650 • area@gasvcs.net • www.a-r-e-a.org

AREA

American Rehabilitation Economics Association

presents this

Certificate of Recognition & Appreciation

to

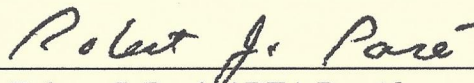
Ronald T. Smolarski

MA, CEA '99, CLCP, CRC, CDEII, ABVE/D

For his energetic & most generous service to AREA as CONFERENCE & EDUCATION CHAIR in 2020-2022.

His involvement has included Speaker selection & scheduling along with extensive venue communication. His tenure has also included coordinating speaker selection & marketing for AREA's 3 virtual webinars to date during the height of the COVID outbreak. Ron's continuous involvement has demonstrated his tireless dedication to the professional image and growth of AREA and its members.

Presented at the 2022 AREA Conference | Chicago, IL | May 28, 2022



Robert J. Paré, AREA President

MARK YOUR CALENDAR!

2023 AREA CONFERENCE

Eldorado Resort Casino Reno

May 18-20, 2023



Millennium Knickerbocker Hotel Chicago

★★ See [page 5](#) for update on Hotel Overflow. ★★

2022 HOTEL RESERVATIONS: Enjoy the complete conference experience by reserving a room at the Millennium Knickerbocker Hotel Chicago.



163 East Walton Place, Chicago, IL 60611

Call toll free at 866.866.8086 or the sales office at 312.751.8100 and reference **American Rehabilitation Economics Association** or group code **05252022AR**. You may also [REGISTER ONLINE](#)* with the Millennium Knickerbocker Hotel.

**Please note that the hotel reservation webpage loads slowly, and we thank you for your patience.*

Our special group room rate is a reasonable \$169 per night. The room block extends from Tuesday, May 24 to Sunday, May 29, 2022 (checkout on Monday, May

30). A major credit card is required to guarantee guest room reservations.

Hotel reservations must be made by Wednesday, May 4, 2022, in order to secure the special group rate.

HOTEL OVERFLOW UPDATE!

Sonesta ES Suites Chicago Downtown



201 East Walton Place, Chicago, IL 60611

**NEW!! Second Hotel Site -- GREAT RATES --
Limited number of rooms**

Beginning on Thursday, April 21, the [Sonesta ES Suites](#) is taking FIRST-COME, FIRST-SERVED reservations for our Conference attendees.

Free continental breakfast is included at Sonesta, but be advised that AREA will be providing a heartier breakfast fare in the Conference meeting room on Conference dates.

Available dates run from Wednesday, May 25 through a Sunday night stay, on May 29, and checking out May 30.

TO MAKE YOUR SONESTA ES SUITES RESERVATION:

- Use the following reservation [LINK](#) for Group **AREA0525** *(If you have any trouble selecting your dates on their site, call/text Margy at 619.302.3257 for assistance.)*

OR

- Call this toll-free number: 1-800 SONESTA and mention you are part of Group "AREA0525."

Pre-booked rooms & rates are guaranteed for the next couple weeks only, ending on May 6, at Sonesta ES Suites.

CHOICES AT THE SONESTA ES SUITES ARE:

- Studio with King-size Bed (and cot optional): \$189/night, plus tax

OR

- One-Bedroom King Suite (and cot optional): \$219/night, plus tax

FRIENDS OF THE ASSOCIATION



**BEACON
REHAB**

Established 1979

Certified Life Care Planner CLCP
Forensic Economist CEA
Vocational Expert IPEC, CRC, ABVE/D, CVE
Certified Functional Capacity Evaluator CDEII

Consultative Review & Rehabilitation



PREMIER VOCATIONAL EXPERTS
Life Care Planning & Rehabilitation Services



**RE-EMPLOYMENT
RESOURCES, L.C.**

Jeroen Walstra, CEA
Earnings Analyst



SHIPP NEEDHAM
Economic Analysis, LLC



Jacqueline Crawford-Apperson,
M.S., C.R.C.
Forensic Vocational Counselor
Springfield, MO



Vocational Expert Witnesses



Thomas Roney LLC
Economic Consulting





2022 AREA Conference Schedule

Please note the **ROOM LOCATIONS** indicated below.

Thursday, May 26	Boot Camps	Intermediate in "CD" Advanced in "AB"	8:45 am - 5:00 pm
Friday, May 27	Main Conference (Tower West)		7:45 am - 6:30 pm
	President's Reception		6:45 pm
Saturday, May 28	Main Conference (Tower West)		7:45 am - 4:00 pm
	Annual Business Meeting (Tower West)		4:15-5:00 pm

UPDATED NOTICE: AREA did not raise prices for conference registration rates this year. However, with recent sticker shock hitting us all, we know that hotel & associated costs have also skyrocketed. In response, AREA's budget has reconciled that some amenities such as an inclusive breakfast are no longer affordable. We deeply appreciate your understanding with this most regrettable change.

THURSDAY, MAY 26

DUAL-TRACK BOOT CAMP

8:45-9:00 am—**INTRO & ANNOUNCEMENTS**

9:00 am - 5:00 pm

Breaks: 10:15–10:30 am; 3:00–3:15 pm

Lunch (on your own): 11:30 am–1:30 pm

INTERMEDIATE 5.5 CEUs

Estimating Lost Earning Capacity and Mitigation from the Ground Up

Allyn B. Needham Ph.D., CEA '00

Shipp Needham Economic Analysis

ADVANCED 5.5 CEUs

Exploring Catastrophic Damages

Kristin Kucsma, M.A.

Sobel Tinari Economics Group

George Barrett MBA MSRC FVE '11 CRC CVE FRC

Brookshire Barrett & Associates LLC

FRIDAY, MAY 27

MAIN CONFERENCE BEGINS

7:45-8:00 am—**INTRO & ANNOUNCEMENTS**

8:00 am - 9:30 am

SESSION 1 1.5 CEUs

KEYNOTE SPEAKER

The Importance of Professional Skill Set and Credentials: The CEA Designation

William Houston Reed

Ph.D., CRC, ABVE/D Emeritus

Refreshment Break—9:30-9:45 am

9:45 am - 10:45 am

SESSION 2 1.0 CEU

Communication Among the Economist, Vocational Evaluator & Life Care Planner

Shannon Shipp, Ph.D., CEA '00

Rod Stoneburner, M.S. CRC

Dawn Cook, RN, CNLCP, CLCP

Frank Slesnick, Ph.D.

Ron Smolarski, MA, CEA '99, CDE II, CLCP,

IPEC, CVE, CRC, ABVE/D

Refreshment Break—10:45-11:00 am

FRIDAY, MAY 27 (continued)

11:00 am - 1:00 pm

SESSION 3 2.0 CEUs

Effective Use of TSA Software Programs

Roderick C. Stoneburner M.S., CRC/Retired

LUNCH ON YOUR OWN—1:00-3:00 pm

3:00 pm - 4:00 pm

SESSION 4 1.0 CEU

Life Care Planners and Economists, Working Better Together

Dawn L. Cook RN, CNLCP, CLCP

Cook Life Care Plan | Dawn Cook Consulting

Refreshment Break—4:00-4:15 pm

4:15 pm - 5:15 pm

SESSION 5 1.0 CEU

G2i, Translating GENERAL Population Data TO the INDIVIDUAL Plaintiff—Problems and Solutions

Frank Slesnick Ph.D.

Beverage Break—5:15-5:30 pm

5:30 pm - 6:30 pm

SESSION 6 1.0 CEU

The Gray Areas in Economic Effects of COVID-19

Roman Garagulagian Ph.D.

Forensic Economic Services LLC

PRESIDENT'S RECEPTION

Friday: 6:45-7:45 pm Sharp!

**14th floor, Tower West,
Promenade (Roof Top)**

CEA EXAM

Sunday: 9:00 am - 5:00 pm

CANDIDATE REVIEW OF MATERIALS AND
PRE-REGISTRATION FOR EXAM ARE REQUIRED.

SATURDAY, MAY 28

7:45-8:00 am – **INTRO & ANNOUNCEMENTS**

8:00 am - 9:30 am

SESSION 7 1.5 CEUs

Labor Markets and Forensic Economics: Will the Economy Suffer from Long-COVID?

Victor A. Matheson Ph.D.

College of the Holy Cross

Refreshment Break—9:30-9:45 am

9:45 am - 10:45 am

SESSION 8 1.0 CEU

Controversies in the Valuation of Household Services

Thomas R. Ireland Ph.D.

Beverage Break—10:45-11:00 am

11:00 am - 1:00 pm

SESSION 9 2.0 CEUs

Determining Damages Through Functional Capacity Evaluation

V. Robert May III Rh.D.

*Richmond Functional Performance Lab, Inc. and
International Commission on Health Care Certification*

LUNCH ON YOUR OWN—1:00-3:00 pm

3:00 pm - 4:00 pm

SESSION 10 1.0 CEU

The Expert Witness: Ethical Challenges, Obligations and Considerations

Anthony Andrews Ph.D., LCMHC-S, LCAS, CRC
Andrews Counseling & Consulting, PLLC

Travis Andrews Ph.D., LCMHC-S (NC),

LPCC (KY), NCC, CRC, BC-TMH

Andrews Counseling & Consulting, PLLC and

University of Kentucky, Dept of Counselor Education

Beverage Break—4:00-4:15 pm

ANNUAL BUSINESS MEETING & 2023 PLANNING SESSION

Saturday: 4:15-5:00 pm

ALL WELCOME !!

8:45 AM - 5:00 PM

(5.5 CEUs)

Refreshment Breaks: 10:15–10:30 am; 3:00–3:15 pm Lunch on your own: 11:30 am – 1:30 pm

INTERMEDIATE BOOT CAMP

Estimating Lost Earning Capacity and Mitigation from the Ground Up



PRESENTER:

Allyn B. Needham

Ph.D., CEA '00

Shipp Needham Economic Analysis

This session will review the basic tools and analysis needed for estimating lost earning capacity or lost economic support in personal damages assignments. The session will include reviewing the facts of the case, beginning the analysis, performing research for needed data, making loss calculations, and discounting future losses to present value. Mitigation will be considered and how it may be included in assessing a person's losses.

Estimating lost household services will also be discussed. If time permits, ways for discounting future medical and care costs show in a life care plan will be reviewed.

NOTE

All updates to conference information is ongoing as part of this virtual brochure.

Feel free to check back often!

ADVANCED BOOT CAMP

Exploring Catastrophic Damages



PRESENTERS:

Kristin Kucsma

M.A.

Sobel Tinari Economics Group



George Barrett

M.B.A., MSRC, FVE '11, CRC, CVE, FRC

Brookshire Barrett & Associates LLC

Participants will be challenged to identify and gather demographic and economic data necessary to calculate the present value of lost earnings and the present value of future medical and care costs resulting from severe personal injury. This session will place significant emphasis on attendees' abilities to develop and apply theoretical methodologies corresponding with available data sources.

Attendees are expected to have competency in using MS Excel and will be expected to have their own individual laptop for use during the session.

[READ MORE ...](#)

FRIDAY, MAY 27

7:45-8:00 am – **INTRODUCTION & ANNOUNCEMENTS**

SESSION 1 ... 8:00 AM - 9:30 AM **1.5 CEUs**

KEYNOTE SPEAKER

The Importance of Professional Skill Set and Credentials: The CEA Designation

PRESENTER: William Houston Reed
Ph.D., CRC, ABVE/D Emeritus

This session will examine the beginning, transformation, and ongoing importance of the Earnings Analyst designation and the professional skill set that distinguishes its holders.

Refreshment Break—9:30-9:45 am

SESSION 2 ... 9:45 AM - 10:45 AM **1.0 CEU**

Communication Among the Economist, Vocational Evaluator & Life Care Planner

PANELISTS:

Shannon H. Shipp, Ph.D., CEA '00
Roderick C. Stoneburner, M.S., CRC/Retired
Dawn L. Cook, RN, CNLCP, CLCP
Frank Slesnick, Ph.D.
Ronald T. Smolarski, MA, CEA '99, CDE II,
CLCP, IPEC, CVE, CRC, ABVE/D

Objectives of this presentation:

- Making Clinical Judgments— Who makes them, what are they, when are they used;
- Handling inconsistencies between economic, vocational, and life care planning disciplines when opining on damages; and
- Collaborating more effectively between disciplines in terms of "turf" or "staying in lanes," as well as those areas of potential mutual input.

THIS IS A CEU-AWARDED SUBSTITUTE PRESENTATION.

Refreshment Break—10:45-11:00 am

SESSION 3 ... 11:00 AM - 1:00 PM

2.0 CEUs

Effective Use of TSA Software Programs

PRESENTER: Roderick C. Stoneburner, M.S., CRC/Retired

Vocational Consultants practicing in the private sector for business and industry utilize job analyses and transferable skills analyses as a foundation for forensic vocational evaluations. Forensic vocational evaluations use the transferable skills analysis to identify the earning capacity of the evaluatee, modified by affecting factors such as medical factors of disability. The job analysis is the foundational component of the transferable skills analysis and, if not completed properly can change the outcome of the process and thus, produce questionable results for the vocational Consultant's final analysis. The result of an inaccurate or incomplete transferable skills analysis can cause problems for the Rehabilitation Economist.

This presentation will present information regarding the forensic job analysis process as it is used to conduct a transferable skills analysis, and then discuss the critical components of the transferable skill analysis process using two software programs; McCroskey Vocational Quotient System and SkillTRAN. Use and purpose of each of the programs will be covered. Each program will be used to demonstrate use and process by completing a sample case requiring the transferable skills analysis process. Each software program will be presented using a case example to show how it is used and how the evidence-based data collection and analysis process applies to reach the final conclusions for employability and residual earning capacity.

This presentation will provide information regarding an overview of the Transferable Skills Analysis process, a theoretical background of the VDARE worker trait analysis, associated software programs, and relevant resources associated with this process culminating with report writing. Use of the Transferable Skills Analysis as a forensic tool will be explained and discussed. The nature of this presentation interactive, allowing for attendees questions .

LUNCH ON YOUR OWN—1:00-3:00 pm

[READ MORE ...](#)

THANK YOU TO ALL AREA'S FRIENDS OF THE ASSOCIATION!

MAIN CONFERENCE

Friday, May 27, 2022 (afternoon)

FRIDAY, MAY 27

SESSION 4 ... 3:00 PM - 4:00 PM 1.0 CEU

Life Care Planners and Economists, Working Better Together

PRESENTER: Dawn L. Cook, RN, CNLCP, CLCP
Cook Life Care Plan | Dawn Cook Consulting

Historically, life care planners have been trained to calculate all the costs for the life care plan over the life expectancy of the plaintiff. Generally, there is very little interaction between the life care planner and the economist, unless there are questions from the economist about frequencies, duration and math calculations after the life care plan has been submitted to the retaining attorney. We can improve our working relationships by improved communication, either directly or through the retaining attorney. Don't let your first conversation with the life care planner be in the trial waiting room.

Refreshment Break—4:00-4:15 pm

SESSION 5 ... 4:15 PM - 5:15 PM 1.0 CEU

G2i, Translating GENERAL Population Data TO the INDIVIDUAL Plaintiff— Problems and Solutions

PRESENTER: Frank Slesnick, Ph.D.

There has been significant discussion in various journals regarding a concept titled "G2i," which is an abbreviation for "General to Individual." The concept is concerned with how courts utilize scientific information, which is generally about populations, and how it can be translated into information so it is useful in the courtroom. The difficulty with this translation is that even though scientific studies are done within a so-called general framework, the court demands that testimony focus on the individual. Although most of the G2i literature focuses on fields such as epidemiology, toxicology, and medicine, the author believes that the issue of G2i applies to other professional fields that testify in court, including forensic economists and vocational experts. As described in this presentation, it will be clear that the G2i problem is difficult to solve for all expert witnesses, but useful solutions have been proposed.

Beverage Break—5:15-5:30 pm

SESSION 6 ... 5:30 PM - 6:30 PM

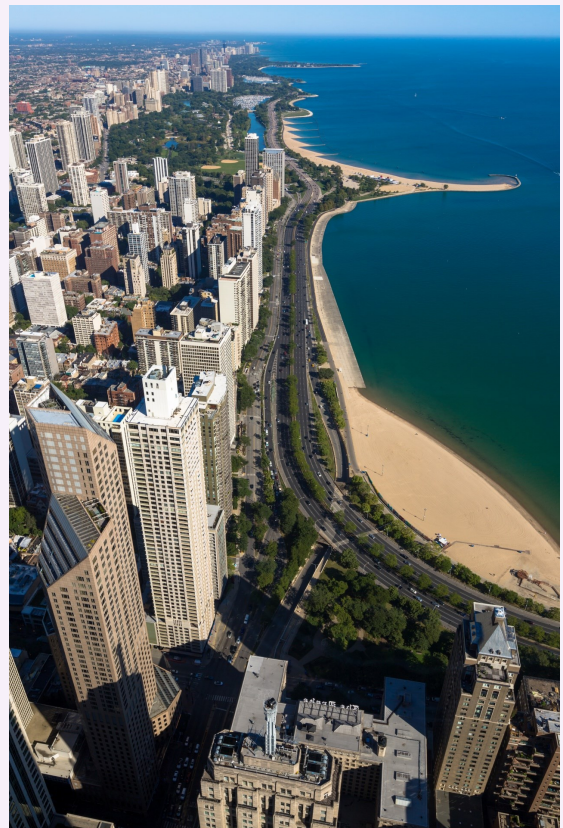
1.0 CEU

The Gray Areas in Economic Effects of COVID-19

PRESENTER: Roman Garagulagian, Ph.D.
Forensic Economic Services LLC

The COVID-19 viral pandemic caught every one off guard. It is a personal experience with various effects. Yet, many questions exist. For example: How much time off has been given vs. should have been given to the ones injured as a results of Covid 19? How many Covid 19 related wrongful death cases or personal injury cases are out there? What is to be done about them to address economic damages. What happens in absence of regulation/compliance as of the time of the incident. What are the experts supposed to do?

[READ MORE ...](#)



PRESIDENT'S RECEPTION

Friday, May 27, 2022 (6:45-7:45 pm Sharp!)

AREA

American Rehabilitation Economics Association

presents this

Award of Lifetime Appreciation

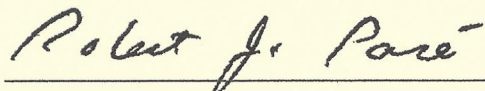
to

Allyn B. Needham, Ph.D., CEA '00

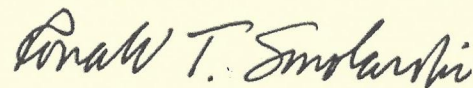
With acknowledgment and humble thanks for his tireless Leadership of selfless energy,
time, talent, gracious demeanor, professional contribution and
effective guidance over many years toward the growth and betterment of the

AMERICAN REHABILITATION ECONOMICS ASSOCIATION

Presented at the 2022 AREA Conference | Chicago, IL | May 28, 2022



Robert J. Paré, AREA President



Ron Smolarski, Conference Chair

MAIN CONFERENCE

Saturday, May 28, 2022 (all day)

SATURDAY, MAY 28

7:45-8:00 am – **INTRODUCTION & ANNOUNCEMENTS**

SESSION 7 ... 8:00 AM - 9:30 AM 1.5 CEUs

Labor Markets and Forensic Economics: Will the Economy Suffer from Long-COVID?

PRESENTER: Victor A. Matheson, Ph.D.
College of the Holy Cross

The COVID-19 pandemic has significantly impacted many aspects of economic life that may affect how forensic economists estimate damages in personal injury, medical malpractice, and wrongful death cases including interest rates, inflation rates, wage growth, labor force participation rates, and employment/population ratios. This presentation traces the impact of the pandemic on multiple economic variables focusing on labor markets and examines the prospects of when and if these variables will return to their pre-pandemic levels.

Refreshment Break—9:30-9:45 am

SESSION 8 ... 9:45 AM - 10:45 AM 1.0 CEU

Controversies in the Valuation of Household Services

PRESENTER: Thomas R. Ireland, Ph.D.

This presentation will discuss five areas of controversy regarding the valuation of household services among economists and vocational experts:

- (1) An expression of earning capacity or ordinary life care?
- (2) Compensation or Prevention of Loss?
- (3) Should advice, counsel, and companionship be included?
- (4) Using *Dollar Value of a Day*

Beverage Break—10:45-11:00 am

SESSION 9 ... 11:00 AM - 1:00 PM

2.0 CEUs

Determining Damages Through Functional Capacity Evaluation

PRESENTER: V. Robert May III, Rh.D.
Richmond Functional Performance Lab, Inc. and
International Commission on Health Care Certification

This presentation will address the functional capacity evaluation process and methodology and demonstrate its applications to traditional vocational evaluation methodology. Topics discussed include the current types of FCE models available that include the FCE evaluation for general employment competency; the FCE evaluation for specific job competency; the FCE evaluation for adjustments in activities of daily living and impairment rating levels; the FCE evaluation for independent living; consistency of testing effort and what the coefficient of variance actually tells us; Hawthorne and rater effects in functional testing; vocational evaluation required adjustments in functional capacity evaluations; a review of an FCE report with vocational evaluation components and summaries.

LUNCH ON YOUR OWN—1:00-3:00 pm

[READ MORE ...](#)



ANNUAL BUSINESS MEETING

Saturday, May 28, 2022 (4:15-5:00 pm)

SATURDAY, MAY 28

SESSION 10 ... 3:00 PM - 4:00 PM

1.0 CEU

The Expert Witness: Ethical Challenges, Obligations and Considerations

PRESENTERS. Anthony Andrews, Ph.D. LCMHC-S LCAS, CRC
Travis Andrews, Ph.D. LCMHC-S (NC),
LPCC (KY), NCC, CRC, BC-TMH
Andrews Counseling & Consulting, PLLC and
University of Kentucky, Dept of Counselor Education

This program will focus on various ethical challenges when progressing through litigation. Challenges to be discussed include interpreting evidence in an unbiased and objective manner, sticking to facts, and remaining objective. Examples of favorable testimony, ethical boundaries, factual details, professional awareness of how to navigate morals and ethical challenges will be presented. Daubert will be discussed as an ethical issue. The value of certification and licensure boards in ethical dilemmas and conflicts will also be presented.

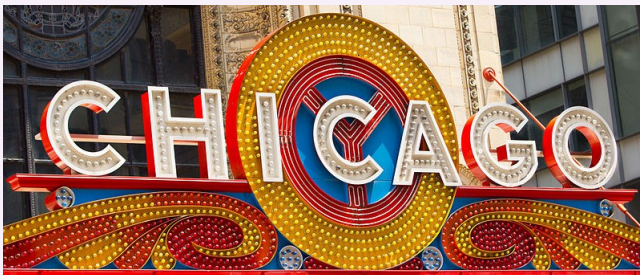
Goal:

Understanding Ethical Practices as an Expert Witness

Objectives:

- Understand the importance of ethics
- Development of standards of ethical practice
- Ethics as part of measures of certification and/or licensure
- What makes an event or practice an ethical issue
- Examples of ethical issues and dilemmas
- Daubert as an ethical issue
- Resolution of ethical problems
- Role of a certification or licensure board in ethical disputes

Beverage Break—4:00-4:15 pm



ANNUAL MEETING

4:15 pm - 5:00 pm

All Are Welcome!

Members & non-members alike are encouraged to attend & suggest ideas for the 2023 Conference.

NOTES: _____

This image shows a single sheet of white paper with horizontal ruling lines. The lines are evenly spaced and run across the width of the page. There are no margins, text, or other markings on the paper.

SPEAKERS AT A GLANCE

ANTHONY ANDREWS Ph.D., LCMHC-S, LCAS, CRC

Andrews Counseling & Consulting, PLLC • Charlotte, NC

TRAVIS ANDREWS Ph.D., LCMHC-S (NC), LPCC (KY), NCC, CRC, BE-THM

Andrews Counseling & Consulting, PLLC and University of Kentucky, Dept of Counselor Education • Lexington, KY

GEORGE BARRETT M.B.A, MSRC, FVE '11, CRC, CVE, FRC

Brookshire Barrett & Associates LLC • Hurricane, WV

DAWN L. COOK RN, CNCLP, CLCP

Cook Life Care Plan | Dawn Cook Consulting • Las Vegas, NV

ROMAN GARAGULAGIAN Ph.D.

Forensic Economic Services LLC • Los Angeles, CA

THOMAS R. IRELAND Ph.D.

University of Missouri-St. Louis (Emeritus) • St. Louis, MO

KRISTIN KUCSMA M.A.

Sobel Tinari Economics Group • Livingston, NJ

VICTOR A. MATHESON Ph.D.

College of the Holy Cross • Worcester, MA

V. ROBERT MAY III Rh.D.

Richmond Functional Performance Lab, Inc. and International Commission on Health Care Certification Midlothian, VA

ALLYN B. NEEDHAM Ph.D., CEA '00

Shipp Needham Economic Analysis LLC • Fort Worth, TX

WILLIAM HOUSTON REED Ph.D., CRC, ABVE/D Emeritus

Beaver, PA

SHANNON H. SHIPP Ph.D., CEA '00

Shipp Needham Economic Analysis LLC • Fort Worth, TX

FRANK SLESNICK Ph.D.

Sun City Center, FL

RONALD T. SMOLARSKI MA CEA '99 CDE II CLCP IPEC CVE CRC ABVE/D

Ann Arbor, MI

RODERICK C. STONEBURNER M.S., CRC/Retired

Wildomar, CA

The **Millennium Knickerbocker Hotel Chicago** is an iconic landmark in the Windy City. Located just off the Magnificent Mile, this famous stretch boasts more than 400 retailers and luxury shops.

Popular attractions within walking distance are:

- 360 Chicago (3 mins)
- Museum of Contemporary Art (5 mins)
- Oak Street Beach (6 mins)
- Magnificent Mile (9 mins)
- Cloud Gate (30 mins)

This 1927 hotel has had many identities, including a Penthouse casino and speakeasy once run by the Capone family. Al Capone's brother ran a casino on the Penthouse floor during the prohibition era. In the 1970s, the hotel had a stint as the Playboy Hotel and Towers under owner Hugh Hefner. Throughout the years, we've housed celebrity guests such as John F. Kennedy, Richard Nixon and the Rolling Stones.



Continuing Education Credit

Application will be made for pre-approval of 13.0 units of continuing education credit for the Main Conference and 5.5 contact hours for the Boot Camp for the following credentials:

- ABVE | IPEC
 - CRC
 - CLCP
 - CVE
- CEUs are also recorded for
AREA's CEA/CRE credentials.

IMPORTANT REMINDER: Those holding a CEA and/or CRE must attend at least one (1) AREA conference and boot camp every three (3) years in order to recertify. *Upon written request, CEAs and CREs may ask for a one-time one-year extension of this requirement for a fee of \$100.*

If you request CE credit for your attendance at the 2022 Conference, **THE FOLLOWING IS REQUIRED:**

- Sign the Attendance Verification sheet *during* your attendance at each session.
- Complete a Program/Activity Evaluation Form for each Boot Camp and Main Conference session you attend and submit them in one of two ways:
 - ◇ **Preferred Method:** Type your comments directly into the Word document and submit the saved file to Margy Ashby at the reception desk before leaving the Conference *OR* email the file to area@gasvcs.net, confirming receipt.
 - ◇ Print and submit a hard copy of all the completed evaluation forms before leaving the conference. Be sure to include your name on the forms so we can confirm that this requirement has been met (to help us keep track of who has/has not submitted their forms).

The session Evaluation Forms will be linked from the Conference webpage which will be accessible to registrants at Conference time.

The deadline by which to return your completed Evaluation Forms will be Monday, June 6, so please complete and submit them before leaving the Conference if possible.

IT'S IMPORTANT THAT YOU SIGN IN FOR ATTENDANCE:

- Your signature on *each** "Sign-in Sheet ◇ Attendance Verification" verifies your attendance at each session. If your signature is missing, it is presumed *you* were missing and we will *not* be able to give you credit for the session.
- Verification of signatures *and* confirmed receipt of evaluation forms need to occur *before* we award any Verification of Completion forms for CEU credit.

There will be a separate sign-in sheet for each Boot Camp and Main Conference session. Be sure to sign *all* the sheets that represent the sessions you attend.

AREA Membership Information

AREA members generally hold at least a Masters degree in a vocational, economic or related field (*not required for Associate membership or Student membership*) or an active CPA license. The majority of members have several national certifications and/or state licenses in their specialization. Most are active in other forensic organizations, and many have published or taught in vocational/economic fields.

[Click here](#) to learn about AREA and as members **What We Do**.

[Click here](#) for our **Current Membership Roster**.

Categories of membership:

- **Professional (\$175)**
 - **Certification:**
 - **Earnings Analyst (EA)***
 - **Certified Earnings Analyst (CEA)**

The cost to apply for the EA and CEA is \$350.

Only Professional members are eligible to apply for certification. If you are not already an AREA member, the total cost would be \$525, including 1st year dues.

* *The EA (Earnings Analyst) is a new offering, available as a stepping stone toward CEA certification. The online application materials have been updated to include this new credential. Please contact the AREA office at area@gasvcs.net if you have any questions or need further information.*

- **Registry:**
 - **Registered Forensic Economist (RFE)**
 - **Forensic Vocational Experts (FVE)**

The cost to apply for the RFE or FVE registry is \$150.

Only Professional members are eligible to apply for registry. If you are not already a member, the total cost would be \$325, including 1st year dues.

- **Associate (\$175)**
- **Student (\$25)**

AREA invites all qualified candidates to submit an application for membership. Please visit the [Join AREA](#) page of our website for complete information.

AREA We welcome your interest in the
American Rehabilitation Economics Association.

Attractions Near the Millennium Knickerbocker Hotel

- ◆ Located next to Magnificent Mile: Upscale shops, Luxe fashion outlets, posh hotels

- ◆ 3 blocks to John Hancock Center and Lake Michigan

- ◆ Museums

- ◇ Adler Planetarium Museum
- ◇ American Writers Museum
- ◇ Art Institute of Chicago
- ◇ Chicago Architecture Center
- ◇ Field Museum
- ◇ Money Museum
- ◇ Museum of Contemporary Art Chicago
- ◇ Museum of Contemporary Photography
- ◇ Museum of Science and Industry
- ◇ Richard H. Driehaus Museum
- ◇ Shedd Aquarium

- ◆ Chicago White Sox ([tickets](#))

- ◆ Chicago Cubs ([tickets](#))

- ◆ 32 Theaters

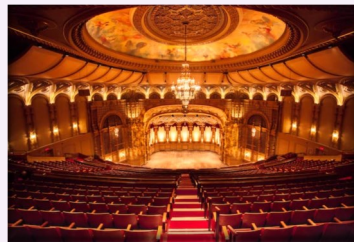
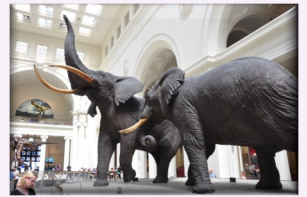
- ◇ Second City
- ◇ Cadillac Palace Theatre
- ◇ Civic Opera House

- ◆ River & Lake Cruises

- ◆ Architecture Guide

- ◆ Millennium Park

- ◆ Restaurants



Click on the above link for Chicago Tours & Tickets.



Offsets: Earnings & Mitigation in Post-COVID Litigation

WELCOME TO THE MILLENNIUM KNICKERBOCKER HOTEL - CHICAGO, ILLINOIS • MAY 26-28, 2022

For Hotel registration and Conference information ... [CLICK HERE](#)

INFORMATION FOR CONFERENCE BADGE & ATTENDEE LIST. (PLEASE PRINT OR TYPE.)

FIRST NAME	MIDDLE INITIAL	LAST NAME	HIGHEST DEGREE & CREDENTIALS
PROFESSIONAL TITLE		COMPANY NAME	
ADDRESS		CITY	
STATE/PROVINCE		ZIP/POSTAL CODE	COUNTRY (if not U.S.)
OFFICE #	CELL # <input type="checkbox"/> CHECK IF YOU <u>DON'T</u> WANT CELL NUMBER PUBLISHED IN THE LIST OF ATTENDEES.	FAX # <input type="checkbox"/> CHECK IF YOU <u>DON'T</u> WANT FAX NUMBER PUBLISHED IN THE LIST OF ATTENDEES.	
E-MAIL		FIRST NAME FOR BADGE	

Attendees **MUST bring a laptop or tablet** as Conference materials will be provided **ONLINE**, access to which will be provided ahead of time.

Check all boxes for which CEU's are requested: ☐ ABVE ☐ CEA/CRE ☐ CLCP ☐ CRC ☐ CVE

FOR NON-MEMBERS, WE ENCOURAGE YOU TO CONSIDER **AREA MEMBERSHIP**. [CLICK HERE](#) FOR APPLICANT INFORMATION.

INFORMATION ABOUT THE **CEA EXAMINATION** IS ALSO AVAILABLE AT THE SAME LINK ABOVE.

THIS REGISTRATION FORM MUST BE SUBMITTED BY EMAIL, FAX, OR MAIL

area@gasvcs.net FAX: 619.839.3817 AREA, PO Box 19941, San Diego, CA 92159-0941

	COMBINED CONFERENCE/ BOOT CAMP		BOOT CAMP ONLY		MAIN CONFERENCE ONLY		PAYMENT TALLY
	Early-Bird until 4/29	After 4/29	Early-Bird until 4/29	After 4/29	Early-Bird until 4/29	After 4/29	
AREA Member	<input type="checkbox"/> \$650	<input type="checkbox"/> \$725	<input type="checkbox"/> \$400	<input type="checkbox"/> \$450	<input type="checkbox"/> \$400	<input type="checkbox"/> \$450	Registration - Mbr \$ _____
Non-Member	<input type="checkbox"/> \$800	<input type="checkbox"/> \$875	<input type="checkbox"/> \$475	<input type="checkbox"/> \$525	<input type="checkbox"/> \$475	<input type="checkbox"/> \$525	Registration - Non-Mbr \$ _____

QUESTIONS? [CALL 800.317.2732](tel:800.317.2732) or [619.440.2650](tel:619.440.2650) • [TEXT 619.302.3257](tel:619.302.3257) • area@gasvcs.net

FRIEND OF THE ASSOCIATION SPONSORSHIP ☐ \$250 THANK YOU!

CIRCLE METHOD OF PAYMENT: PayPal U.S. Mail

GRAND TOTAL \$ _____

Please select your preferred Boot Camp level below:

- ☐ **INTERMEDIATE**— "Estimating Lost Earning Capacity and Mitigation from the Ground Up"
- ☐ **ADVANCED**— (Economics topic to be announced)

[PAY HERE](#) through PayPal

REFUND POLICY: CANCELLATIONS must be requested *in writing* and emailed to the AREA office *for receipt* according to the following schedule:

Full refund for cancellations rec'd on or before May 1. • Refund less \$100 rec'd on or before May 13. • No Refunds after May 13. • No Refunds for No-Shows.